

This manual is for reference and historical purposes, all rights reserved.

**This page is copyright© by M. Butkus, NJ.**

This page may not be sold or distributed without the expressed permission of the producer

I have no connection with any camera company

On-line camera manual library

This is the full text and images from the manual. This may take 3 full minutes for the PDF file to download.

**If you find this manual useful, how about a donation of \$3 to: M. Butkus, 29 Lake Ave., High Bridge, NJ 08829-1701 and send your e-mail address so I can thank you. Most other places would charge you \$7.50 for a electronic copy or \$18.00 for a hard to read Xerox copy.**

**This will allow me to continue to buy new manuals and pay their shipping costs.**

**It'll make you feel better, won't it?**

**If you use Pay Pal or wish to use your credit card,  
click on the secure site on my main page.**

**KODAKS**  
**AND KODAK SUPPLIES**  
**FOR 1906**

**EASTMAN KODAK COMPANY:**  
**ROCHESTER, N. Y.**

PUBLISHED, MARCH, 1906,  
AT THE KODAK CITY  
FOR THE INFORMATION  
OF THE USERS OF  
THE KODAK PRODUCTS

## THE HOME SIDE

**A**N old, old friend drops in for the evening. Talk turns to other days and presently the ancient family album and the basket of loose photographs appear from somewhere. Full they are of pleasant memories and in reminiscent mood each of you recalls a tale of the past that through all the years has remained as clear within the mind as a happening of yesterday. And, though you do not admit it to anyone—hardly even to yourself—there is one picture that makes your heart beat just a trifle quicker, and for the moment you forget the chatter of the friends present, in a dream of a friend of the days of long ago.

And then you go to the drawer in the old secretaire and fetch out a little package of Daguerreotypes. Quaint they are, with their ornamental cases and red plush and gilt. And as you look at the picture of grandfather on his fifteenth birthday you declare that "John looks just as his great grandfather did." And there is one of grandmother and Aunt Elizabeth in the full glory of puff sleeves and hoopskirts. Their hair is parted in the middle, with a net-bound "water-fall" at the back, and at the throat each wears a painted miniature.

To you those pictures are beyond price. But what a delight if they were only supplemented by something less formal—Kodaks of those childhood days, Kodaks of the days of young man and womanhood, Kodaks of the things that they were interested in, and then Kodaks of their sunset days.

But the Kodak had not come then. Photography was but creeping. It was the mysterious dark art, not the intimate part of home life that it is to-day.

Photography has worked wonders along the road of scientific research ; but of what value is the photograph showing the flight of a comet compared with the Kodak of baby taking his first steps? The photographic record of a seismic disturbance may appeal to a few dry scientists, but it is insignificant in interest when alongside the Kodak of *the* four-year-old, proud in the possession of his first trousers with pockets.

Strongly as photography appeals in every phase of living interest, in science, history, travel, sport, 'tis in its home side that it touches most vitally. Therein is the true witchery of Kodakery.

## THE SIMPLE WAY TO BETTER PICTURES

**T**WO things we have always had in mind in the manufacture of Kodaks and photographic material: simplifying the processes of picture making and improving the pictures. Along these lines we are still progressing.

At first Kodaks loaded and unloaded in the darkroom. Then the cartridge system was devised, and now film is put up in light proof cartridge spools of 12, 6, or 4 exposures each, which can be slipped into the Kodak in any light; the exposures made, and the spool removed from the camera in any light.

For years film was of necessity developed in the darkroom with all the inconvenience attendant upon that operation. Then came the Kodak Developing Machine, in which a roll of film could be developed in daylight—a far simpler and more certain process. Not long since we made a decided improvement even upon the Kodak Developing Machine in the Kodak Tank Developer. By this most modern process of development the film is rolled up in a winding box together with a light proof apron; then the film thus protected is transferred in daylight to a metal cup, where development is allowed to go on until completion. Simple to the last degree.

The matter of printing has engaged our attention. Years ago every photographer coated his own printing paper. We perfected gelatine printing-out papers that were sold ready for printing. But these papers could only be printed by sunlight. Then came the gaslight papers, of which Velox is the standard. Velox prints by artificial light in a few seconds; is developed by immersing in a chemical solution for a

few seconds more. The Velox papers make print making an enjoyable diversion about the library lamp in the evening, and have alone attracted thousands of amateurs to that fascinating part of photography beyond merely "pressing the button."

The problem of chemicals was once a bothersome one for the amateur photographer with limited time at his disposal. We have figured out perfect formulæ and now put up chemicals combined in just the right proportion for the different operations of picture making, leaving the amateur nothing to do but combine the powders with water to get solutions which will give him the very best results.

In simplifying and improving the processes of photography, no part has escaped our attention. We have even been able to make a great improvement in mounting. Prints mounted with our new product, Kodak Dry Mounting Tissue, do not curl even on the thinnest mounts. Those at all familiar with picture making will appreciate what this means. The curl of mounted prints has always been very objectionable — impossible to overcome on thin mounts, while even on heavy mounts there invariably is the tendency to curl. With Kodak Dry Mounting Tissue all this curling trouble is ended. The thinnest mount lies flat with the print entirely in contact. Thus double and triple mounting becomes possible; different tints



of light stock may be used as inserts, one above the other, and all will lie flat. Kodak Dry Mounting Tissue is especially desirable in mounting prints in albums, as there is no crinkling of the album leaves after the print is attached.

Besides the non-curling feature, Kodak Dry Mounting Tissue has other decided advantages. The Tissue is dry; not sticky to handle; mounting is done more quickly; no time lost in drying, as is the case with paste mounting; there is no apparatus required—just the Tissue and a flatiron.

So photography by the Kodak system becomes simpler and simpler, and the quality of pictures keeps averaging higher and higher. And the end is not yet, for each important step forward seems to open the way to still newer and better methods undreamed of before.



# OUR TWENTY YEARS OF FILM EXPERI- ENCE

**I**F there is any one line of business in which experience is more important than in any other, that line is the manufacture of highly sensitive photographic goods. And of all photographic processes, film making is the most difficult. It has taken us more than twenty years to learn what we know about making film.

And in that twenty years we have also learned how to make the perfect raw materials which are absolutely essential to the manufacture of film—materials which cannot be obtained in the market with a certainty that they will be what they should be. We nitrate our own cotton for the film base; we nitrate our own silver for the emulsion. We go further, we even make the acid with which the cotton and silver are nitrated. Wherever it is possible to improve the completed product by manufacturing the raw material, we erect a factory and make that raw material.

Five years ago we felt that we were approaching film perfection, but no concern, even if it could make film as good as that *was*, could compete in quality with the Kodak N. C. Film of to-day. But experience is not the only advantage that our chemists and film makers enjoy. They have access to the formulæ of the chemists who make the best dry plates in the world. The Kodak films of to-day have in them the combined knowledge of the most expert film makers and the most expert plate makers.

The wise amateur will be sure that he gets the film with experience behind it. There are dealers, fortunately not many, who try to substitute inferior films

from inexperienced makers, the only advantageous feature which these films possess being the "bigger discount to the dealer." Amateurs, especially those who leave their Kodaks with the dealer to be loaded, should make sure that substitution is not practiced against them.

The film you use is even more important than the camera you use. Be sure it's Kodak film with which you load your Kodak.

Remember :

IF IT ISN'T  
EASTMAN  
IT ISN'T KODAK FILM

---

LOOK FOR "EASTMAN" ON THE BOX  
LOOK FOR "KODAK" ON THE SPOOL END

## NEW KODAKS AND NEW KODAK GOODS

**T**HE efforts of our experimental department through the past year, now with this article and now with that, have been fruitful. We have brought to perfection a Kodak with entirely new features of equipment, the No. 3B Quick-Focus Kodak, and offer it this season as an effective box form camera of a most desirable size.

The great success of the Folding Pocket Kodaks in the larger sizes has induced us to go a step further and in the new No. 4A Folding Kodak we have produced a superb instrument of this type which takes a picture  $4\frac{1}{4} \times 6\frac{1}{2}$ , an entirely new size in a film camera.

This new Kodak is fully described on page 24.

In our Kodak Tank Developers we have made a decided improvement this year. The Solution Cup (in the larger sizes) is now furnished with a cover, and instead of turning the film in the cup end for end during development, as heretofore, the entire cup containing the film is now inverted. Covers are not furnished, however, for the Brownie Tanks, as in such a small size there is no difficulty in taking out and inverting the transferring reel. A new size Kodak Tank Developer is also offered, the "7-inch." This size takes No. 5 Cartridge Kodak Film.

In papers and sundries we have also made improvements and added to our lists: Velvet Bromide paper, a new surface in Bromide paper like Velvet Velox, will be welcomed by every amateur who does enlarging; also Royal Re-Developer, a preparation for giving Sepia tones to Eastman's Bromide papers by a simple process; a splendid line of new Albums at a moderate price will interest every amateur. Kodak

Dry Mounting Tissue we have referred to in the preceding pages.

We catalogue, also, some attractive new Kodak mounts.

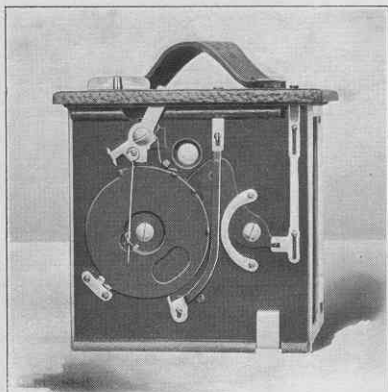
Our developing and printing department has been given greater efficiency and is now equipped for mounting prints with Kodak Dry Mounting Tissue so they will not curl, and all orders will be filled in this way.

EASTMAN KODAK COMPANY,

Rochester, N. Y.

The Kodak City.

## EASTMAN ROTARY SHUTTER



**A** SIMPLE but efficient shutter, operated by simply throwing a lever alternately to the right and left. Another lever sets it for "time" exposures, and another operates the stops, of which there are three. Supplied on the Bull's-Eye, the Flexo, No. 3B Quick-Focus Kodak,

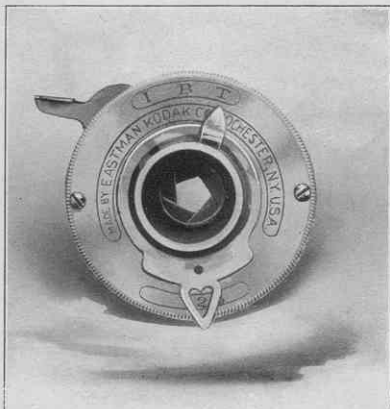
and on the No. 1 and No. 2 Brownies.

## POCKET AUTOMATIC SHUTTER

**D**ESIGNED especially for the smaller cameras.

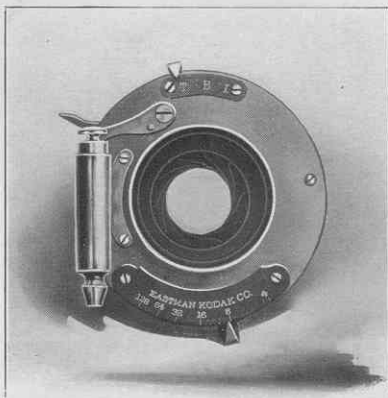
One pressure makes a snap. With the "B" exposure, the shutter opens when lever is pressed and closes when it is released. Time exposures are made by pressing the lever once to open and again to close the shutter.

Has iris diaphragm stops. Supplied on the No. 1 and 1A Folding Pocket Kodaks, and No. 2 Folding and Stereo Brownies.

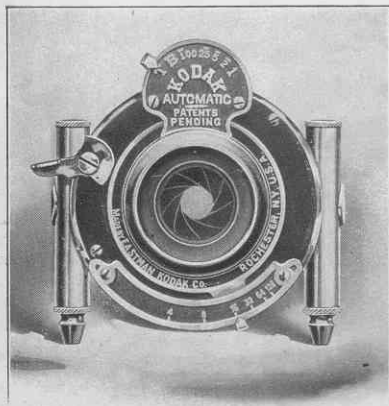


## F. P. K. AUTOMATIC SHUTTER

**T**HIS shutter is always set, a single pressure of the bulb giving instantaneous exposures of  $\frac{1}{50}$  of a second. It has also the "bulb" exposure and "time" exposure. It has iris diaphragm stops Nos. 4 to 128. Supplied on the No. 2, No. 3, and No. 3A Folding Pocket Kodaks and, without pneumatic release, on No. 3 Folding Brownie.



## KODAK AUTOMATIC SHUTTER

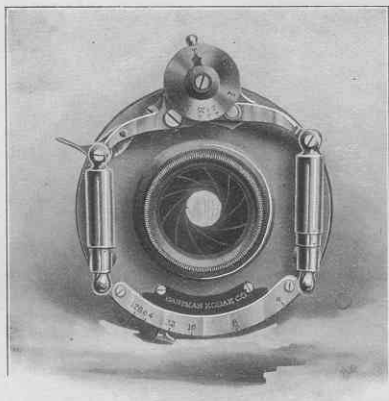


**I**N THIS new shutter the highest degree of excellence is attained. It gives automatic exposures from  $\frac{1}{100}$  of a second to one second; has the "bulb" exposure, and the "time" action. Has iris diaphragm stops Nos. 4 to 128. Supplied on No. 3 and No. 4 Cartridge Kodaks, and No. 4

Screen Focus Kodak, and as special equipment on No. 3 and 3A Folding Pocket Kodaks.

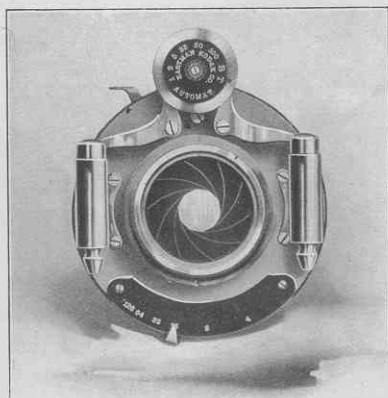
## THE UNICUM SHUTTER

**T**HE Unicum is well made, accurate, and durable. It works with finger lever or bulb and by means of a pneumatic retarding device gives exposures from  $\frac{1}{100}$  of a second to one second. It has also the "bulb" and "time" exposures and has iris diaphragm stops with scale for Nos. 4 to 128. This shutter is regularly fitted to the No. 5 Cartridge Kodak.

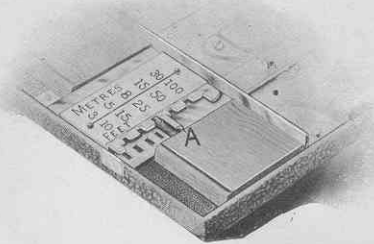


## B. & L. AUTOMATIC SHUTTER

**T**HIS is a standard shutter of the highest grade. It works with either pneumatic or finger release. It has iris diaphragm stops with scale for Nos. 4, 8, 16, 32, 64, and 128. Gives exposures automatically from  $\frac{1}{100}$  of a second to one second. Also "bulb" and "time" actions. Regularly supplied on No. 4A Folding Kodak and as special equipment on the No. 5 Cartridge Kodak.



## AUTOMATIC FOCUSING LOCK



**A** NEW feature of adjustment which we have introduced into a number of our cameras is an automatic locking device for bringing the instrument to a quick and certain focus.

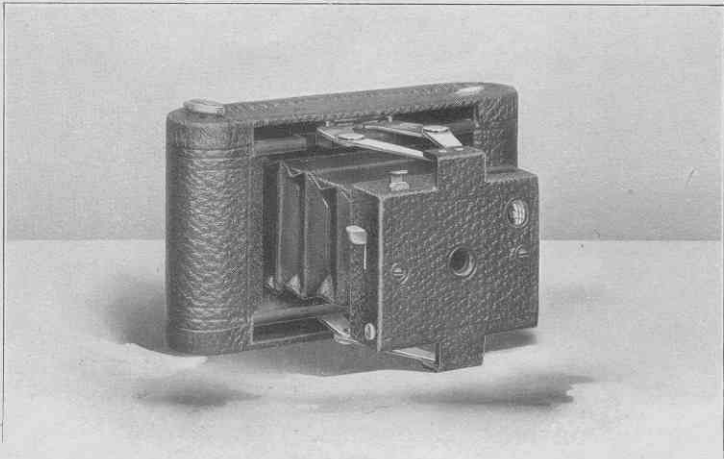
The focusing lock consists of a lever, marked "A" in the above illustration, and a scale of distances marked differently on the different cameras. Many times when one wishes to take a picture in a hurry he is careless about drawing the front bed of his camera out so that the pointer is *exactly* opposite the proper distance on the regular focusing scale. Then his picture is a little out of focus.

With the locking device, which in no way interferes with the regular focusing scale, all the operator does to get his camera in focus is to set the lever A in the slot marked for the distance desired. Then he pulls out front of camera to limit of motion and the instrument catches and is in focus for the number of feet for which he has set the catch.

Frequently it is convenient to use the  $3\frac{1}{2}$  x  $3\frac{1}{2}$  or smaller instruments as fixed-focus cameras, which is easily done by setting the lock at 20 feet and leaving it so set. For accurate work, however, it is advisable to make use of the other locking points.



## No. 0 FOLDING POCKET KODAK



**T**O THOSE who want a camera of even more than the usual compactness, this complete little instrument will strongly appeal. It can be slipped into the pocket as easily as a wallet, is always ready for making pictures, and there is no point about it that is not of the highest quality. Pictures made with it are so sharp and clear that they may be enlarged to almost any size. It is made of aluminum, rendering it light; covered with fine black seal grain leather, and has nickeled fittings. It is as dainty as a lady's purse.

For rectangular pictures  $1\frac{5}{8} \times 2\frac{1}{2}$  inches. Capacity, 12 exposures without reloading. Size of Kodak,  $5\frac{5}{8} \times 3\frac{1}{8} \times 1\frac{3}{8}$  inches. Weight, 12 ounces. Lens, fixed focus meniscus, 3-inch focus. Shutter, Eastman Automatic, which has set of three stops and is adjustable for "instantaneous" and "time" exposures.

### THE PRICE

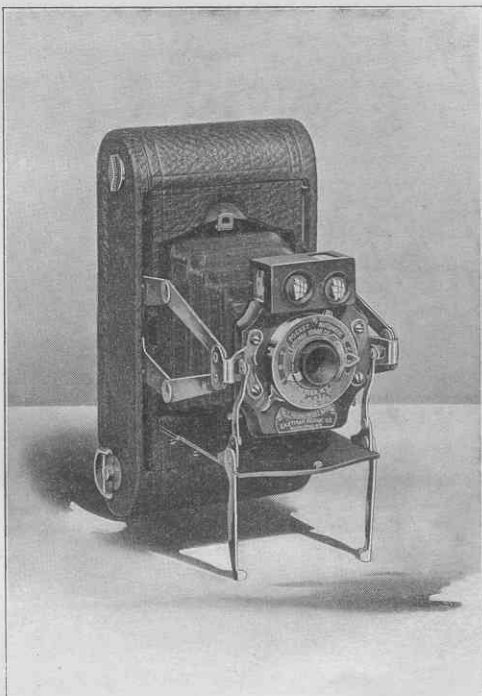
No. 0 Folding Pocket Kodak, for pictures $1\frac{5}{8} \times 2\frac{1}{2}$ , . . . . .	\$6.00
N. C. Film Cartridge, 12 exposures, $1\frac{5}{8} \times 2\frac{1}{2}$ , . . . . .	.25
Ditto, 6 exposures, . . . . .	.15
Kodak Portrait Attachment, . . . . .	.50
Black Sole Leather Carrying Case, with shoulder strap, . . . . .	1.00

## No. 1 FOLDING POCKET KODAK

**I**MPROVEMENTS recently made on this camera double its value as a practical instrument for tourists. The highly efficient Pocket Automatic Shutter, with which it is now fitted, places it distinctly in the class of the higher-grade instruments.

The camera closes compactly with all adjustments concealed, the bed folding automatically over the front board and bellows. The two standards provided to support the camera when making vertical time exposures swing up out of the way when the camera is used for snap shots.

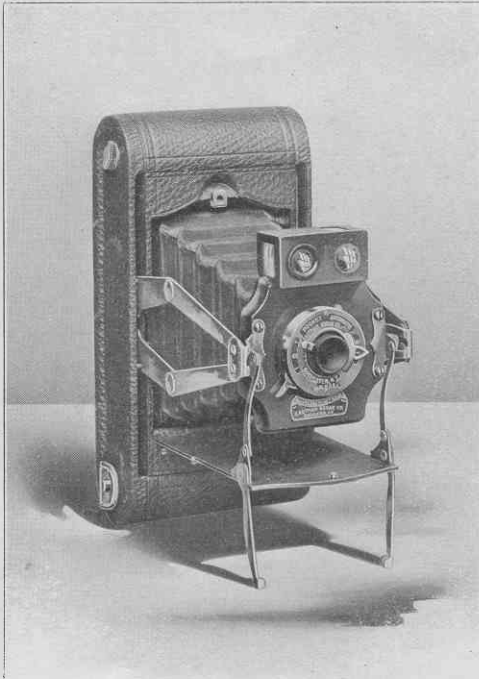
For rectangular pictures  $2\frac{1}{4} \times 3\frac{1}{4}$  inches. Capacity, 12 exposures without reloading. Size of Kodak,  $6\frac{3}{4} \times 3\frac{1}{2} \times 1\frac{5}{8}$  inches. Weight, 16 ounces. Lens, Meniscus Achromatic, 4-inch focus. Shutter, Pocket Automatic. (See page 12.) Two brilliant finders.



### THE PRICE

No. 1 Folding Pocket Kodak, for pictures $2\frac{1}{4} \times 3\frac{1}{4}$ inches, with Pocket Automatic Shutter, . . . . .	\$10.00
N. C. Film Cartridge, 12 exposures, $2\frac{1}{4} \times 3\frac{1}{4}$ , . . . . .	.40
Ditto, 6 exposures, . . . . .	.20
Kodak Portrait Attachment, . . . . .	.50
Black Sole Leather Carrying Case, with shoulder strap, . . . . .	1.25

# No. 1A FOLDING POCKET KODAK



**T**HE new features of the No. 1 are embodied in the No. 1A Folding Pocket Kodak—Pocket Automatic Shutter with iris diaphragm, and with instantaneous, time, and bulb exposure adjustments; new automatic closing front. The shape of the pictures this instrument takes—long in proportion to the width—is particularly

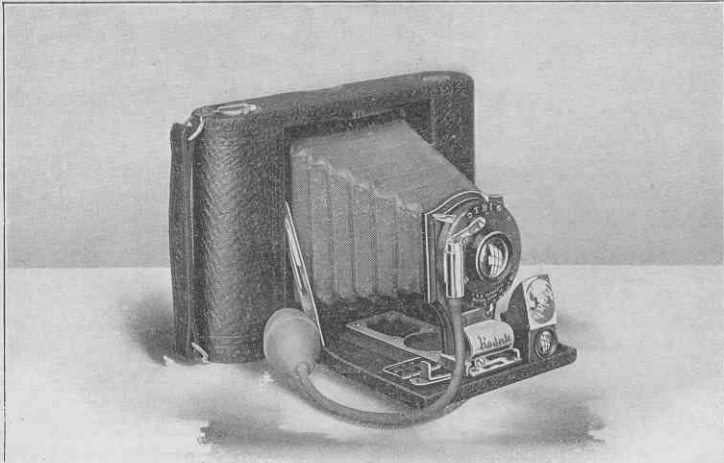
artistic, and makes the camera invaluable for pictorial composition. It is particularly adapted to landscape views where the instrument is used horizontally, and to portraiture (especially full-length figures) where it is used vertically.

For rectangular pictures  $2\frac{1}{2} \times 4\frac{1}{4}$  inches. Capacity, 12 exposures without reloading. Size of Kodak,  $7\frac{3}{4} \times 3\frac{3}{8} \times 1\frac{3}{4}$  inches. Weight, 20 ounces. Lens, meniscus achromatic with fixed focus of 5 inches. Shutter, Pocket Automatic. (See page 12.) Two brilliant finders.

## THE PRICE

Folding Pocket Kodak No. 1A, with Pocket Automatic Shutter, . . . . .	\$12.00
N. C. Film Cartridge, 12 exposures, $2\frac{1}{2} \times 4\frac{1}{4}$ , . . . . .	.50
Ditto, 6 exposures, . . . . .	.25
Kodak Portrait Attachment, . . . . .	.50
Black Sole Leather Carrying Case, with shoulder strap, . . . . .	1.25

## No. 2 FOLDING POCKET KODAK



**T**HIS marvelously compact folding camera takes the popular  $3\frac{1}{2} \times 3\frac{1}{2}$  picture and is regularly fitted with the F. P. K. Automatic shutter—a shutter that has given perfect satisfaction on the highest class instruments.

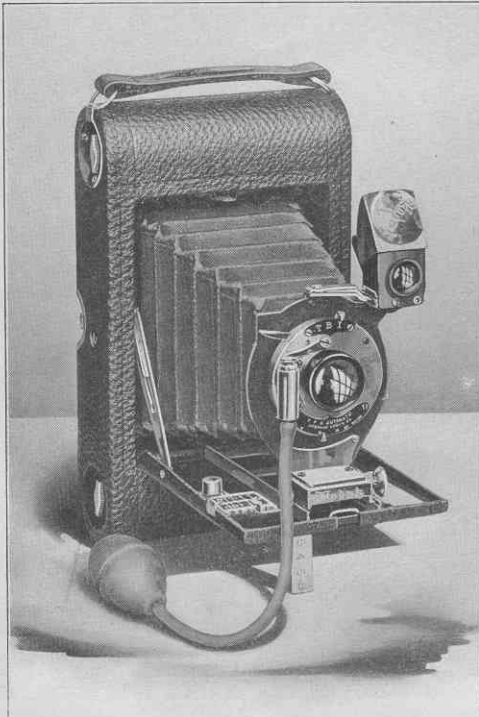
An advantageous feature of No. 2 Folding Pocket Kodak is the automatic locking device. By means of this the camera locks at eight feet, twenty feet, or 100 feet focus, or may be left locked at the twenty feet focus and used as a “fixed focus” camera.

For square pictures,  $3\frac{1}{2} \times 3\frac{1}{2}$  inches. Capacity, 12 exposures without reloading. Size of Kodak,  $6\frac{3}{4} \times 4\frac{1}{2} \times 1\frac{1}{2}$ . Weight, 18 ounces. Lens, double combination rapid rectilinear,  $4\frac{1}{2}$ -inch focus. Shutter, F. P. K. Automatic. (See page 13.) Automatic focusing lock. (See page 15.) Brilliant finder. Socket for tripod screw.

### THE PRICE

No. 2 Folding Pocket Kodak with Rapid Rectilinear Lens and F. P. K. Automatic Shutter.	\$15.00
N. C. Film Cartridge, 12 exposures, $3\frac{1}{2} \times 3\frac{1}{2}$ ,	.60
Ditto, 6 exposures,	.30
Ditto, “Double-Two” Cartridge, 4 exposures,	.20
Kodak Portrait Attachment,	.50
Black Sole Leather Carrying Case, with shoulder strap,	1.25

## No. 3 FOLDING POCKET KODAK



**T** H E wonderful success of this camera is attributable to its simplicity and compactness, coupled with its adaptability to a wide range of work. It folds into such small compass as to be carried with little or no inconvenience in an ordinary coat pocket, yet has the features needed for pictorial work.

Fitted with our F. P. K. Automatic Shutter and double combination lenses, which are strictly rectilinear and very rapid. This shutter works either with bulb or trigger. The camera has the automatic locking device, which greatly adds to its convenience.

A rising and sliding front, a shutter of greater scope, and anastigmat lenses are desired by many amateurs with this high-grade instrument. We furnish the camera with B. & L. Plastigmat and Kodak Automatic shutter, or with B. & L. Zeiss Tessar lens and Volute shutter.

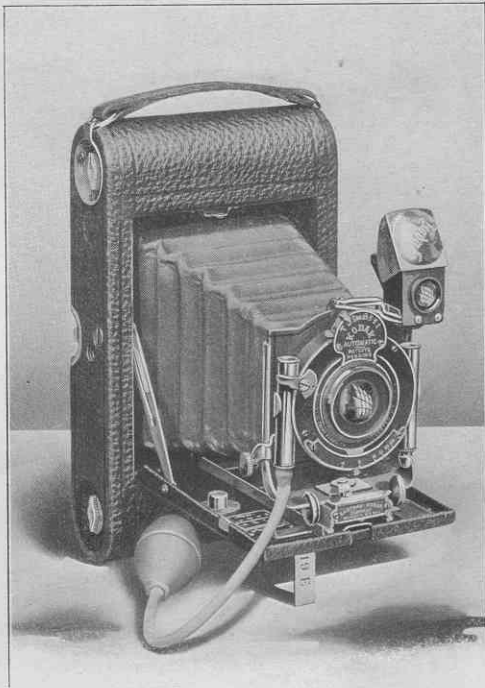
The extra charge for rising and sliding front with

## No. 3 F. P. KODAK—CONTINUED

the regular equipment is \$1.

By the use of a simple adapter these instruments may be readily used with glass dry plates. This attachment has a ground glass for focusing, and uses single aluminum plate holders.

The camera is made of aluminum, covered with fine, black, seal grain leather.



SHOWING RISING FRONT AND KODAK AUTOMATIC SHUTTER

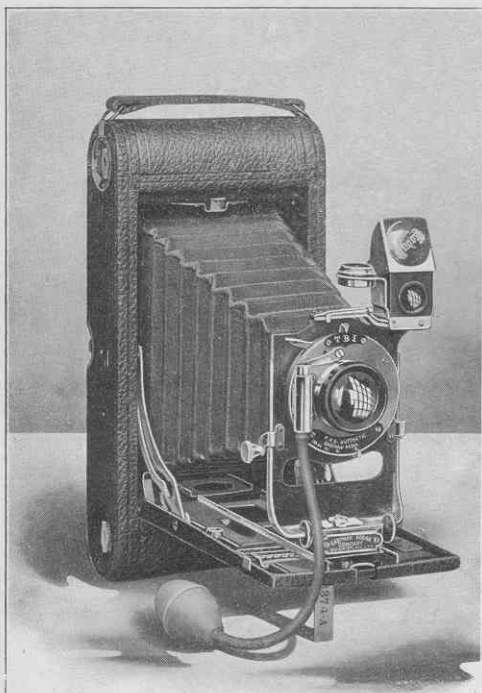
For rectangular pictures,  $3\frac{1}{4} \times 4\frac{1}{4}$  inches. Capacity, 12 exposures without reloading. Size of Kodak,  $7\frac{1}{2} \times 4\frac{1}{2} \times 1\frac{5}{8}$  inches. Weight, 23 ounces. Lens, Rapid Rectilinear, speed f. 8. Focal length, 5 inches. Shutter F. P. K. Automatic. (See page 13.) Two tripod sockets. Brilliant reversible finder with hood. Automatic focusing lock. (See page 15.)

### THE PRICE

*No. 3 Folding Pocket Kodak with Rapid Rectilinear Lens, speed f. 8, F. P. K. Automatic Shutter, . . . . .	\$17.50
*Ditto, with Kodak Automatic Shutter, . . . . .	25.00
*Ditto, with Kodak Automatic Shutter and B. & L. Plastigmat Lens No. 1, f. 6.8, . . . . .	57.00
*Ditto, with Volute Shutter and B. & L. Zeiss Tessar Lens, Series II B, No. 4, f. 6.3, . . . . .	63.50
Black Sole Leather Carrying Case, with strap, . . . . .	1.25
Glass Plate Adapter, with ground glass, . . . . .	3.50
Single Glass Plate Holders, $3\frac{1}{4} \times 4\frac{1}{4}$ , . . . . .	.50
N. C. Film Cartridge, 12 exposures, $3\frac{1}{4} \times 4\frac{1}{4}$ , . . . . .	.70
Ditto, 6 exposures, . . . . .	.35
Ditto, "Double-Two," 4 exposures, . . . . .	.25
Kodak Portrait Attachment, . . . . .	.50

\* Add one dollar if Rising and Sliding Front is desired.

## No. 3A FOLDING POCKET KODAK



**T**HIS is a most efficient instrument, taking pictures of a size and shape,  $3\frac{1}{4} \times 5\frac{1}{2}$ , that commend it to the most ambitious amateurs. It may be carried in a top-coat pocket, yet has really all the practical features found in cameras of three times its bulk. With its great capabilities, however, the Kodak simplicity is

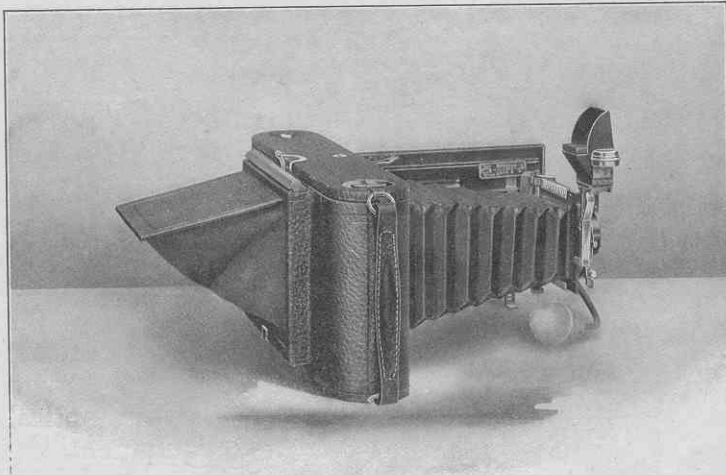
fully maintained, and the merest novice can operate the instrument with no further directions than those contained in the illustrated manual.

In selecting the lenses for these cameras we exercise the greatest care. The lenses furnished with the regular equipment are Rapid Rectilinear, with a focal length of  $6\frac{1}{2}$  inches and a speed of f.8. The shutter is the F. P. K. Automatic—high grade in every way.

A desirable feature with which every No. 3A Folding Pocket Kodak is equipped is the rising, falling, and sliding front. The camera also has the automatic locking device.

# No. 3A FOLDING POCKET KODAK

CONTINUED



SHOWING PLATE ADAPTER WITH FOCUSING SHADE

By the use of a simple adapter the No. 3A Folding Pocket Kodaks may be used with glass plates, taking the standard size,  $3\frac{1}{4} \times 4\frac{1}{4}$ . This attachment is simply an extra back for the camera, taking the place of the regular back, and can be placed in position in a few seconds. It has a ground glass with focusing shade, and uses single aluminum plate holders.

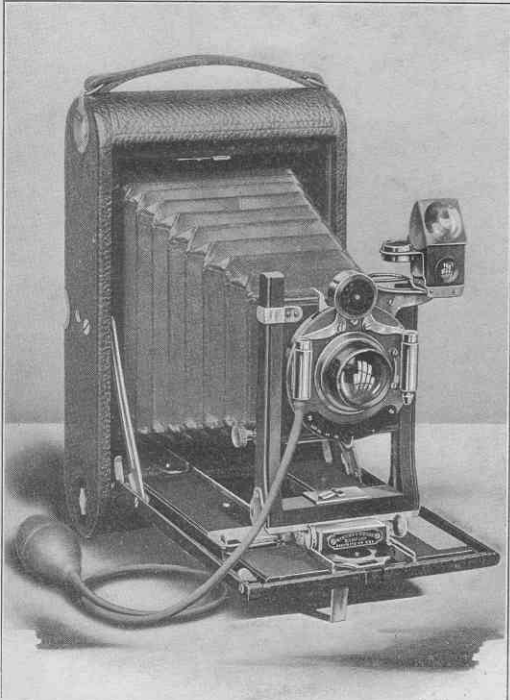
For rectangular pictures  $3\frac{1}{4} \times 5\frac{1}{2}$  inches. Capacity, 10 exposures. Weight, 41 ounces. Lens, double combination, rapid rectilinear, speed f. 8. Focal length,  $6\frac{1}{2}$  inches. Shutter, F. P. K. Automatic. (See page 13.) Two tripod sockets. Brilliant reversible finder with hood and spirit level. Automatic focusing lock. (See page 15.)

## THE PRICE

No. 3A Folding Pocket Kodak with Rapid Rectilinear Lens, speed f. 8, and F. P. K. Automatic Shutter, . . . . .	\$20.00
Ditto, with Kodak Automatic Shutter, . . . . .	27.50
Ditto, with Kodak Automatic Shutter and B. & L. Plastigmat Lens No. 2, f. 6.8, . . . . .	65.00
Ditto, with Volute Shutter and B. & L. Zeiss Tessar Lens, Series II B, No. 4, f. 6.3, . . . . .	78.00
Black Sole Leather Carrying Case, with strap, . . . . .	1.50
Glass Plate Adapter, $3\frac{1}{4} \times 4\frac{1}{4}$ , with ground glass, . . . . .	3.50
Single Glass Plate Holders, $3\frac{1}{4} \times 4\frac{1}{4}$ , each, . . . . .	.50
N. C. Film Cartridge, 10 exposures, $3\frac{1}{4} \times 5\frac{1}{2}$ , . . . . .	.70
Ditto, 6 exposures, . . . . .	.40
Ditto, "Double-Two" Cartridge, 4 exposures, . . . . .	.30
Kodak Portrait Attachment, . . . . .	.50



## No. 4A FOLDING KODAK



**I**N this camera we have followed the lines of the No. 3A Folding Pocket Kodak, but have increased the size of the picture to  $4\frac{1}{4} \times 6\frac{1}{2}$  inches. A strong feature of this camera is the optical equipment, the lenses and shutters being such as are ordinarily furnished on the highest grade 5x7 cameras, thus ensuring speed

and covering power. The lens is a Double Combination Rapid Rectilinear with a speed of f. 8, which covers the plate sharp to the very corners; the shutter is the No. 2 Bausch and Lomb Automatic.

Yet there is nothing the least complicated in the operation of this camera. It's as simple as the Folding Pocket Kodaks. It loads in daylight with 6 exposure film cartridges; the Automatic Focusing Lock, makes focusing so easy that a child can place the instrument accurately in focus. Such adjustments as the rising front and the sliding front which the No. 4A Folding Kodak has are at once simple and effective.

## No. 4A FOLDING KODAK

CONTINUED

For the traveler this camera is ideal. Notwithstanding the large-size picture it takes, it folds into a smaller compass than one would believe possible, being when closed only  $2\frac{5}{8}$  inches in thickness. For home portraiture it is excellent, making portraits of a desirable size. With the Kodak Portrait Attachment, with which it may be supplied, and the extension focusing scale, it can be operated as close as  $3\frac{1}{2}$  feet from the subject, thus permitting head and shoulder portraits of a size limited only by the size of the plate.

In landscape work it affords great scope for the composition of the picture, used either vertically or horizontally.

The frame work of the instrument is made of aluminum, rendering it very light. The parts are fitted together with that nicety of adjustment which has made Kodaks famous for their qualities of endurance under trying conditions.

By means of an adapter, furnished extra, the camera becomes available for glass plates. With this adapter double plate holders,  $4\frac{1}{4} \times 6\frac{1}{2}$ , may be used.

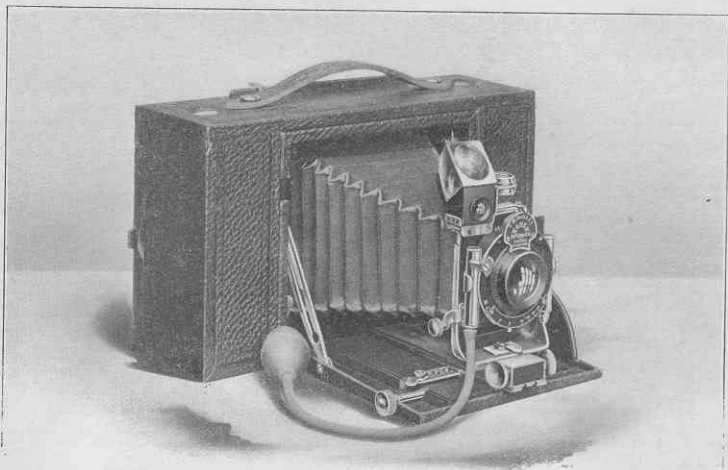
It is covered with the finest black seal grain leather, and has nickel fittings.

For rectangular pictures,  $4\frac{1}{4} \times 6\frac{1}{2}$  inches. Capacity, 6 exposures. Size of Kodak,  $11 \times 6\frac{1}{2} \times 2\frac{5}{8}$  inches. Lens, Double Combination Rapid Rectilinear, speed f. 8. Focal length,  $8\frac{1}{2}$  inches. Shutter, B. & L. Automatic. (See page 14.) Rising and sliding front. Brilliant reversible finder with hood and spirit level. Two tripod sockets.

### THE PRICE

No. 4A Folding Kodak, pictures $4\frac{1}{4} \times 6\frac{1}{2}$ , . . . . .	\$ 35.00
Ditto, with Volute Shutter and B. & L. Zeiss Tessar Lens, Series II B, No. 6, f. 6.3, . . . . .	100.00
N. C. Film Cartridge, 6 exposures, $4\frac{1}{4} \times 6\frac{1}{2}$ , . . . . .	.65
Ditto, "Double-Two" Cartridges, 4 exposures, . . . . .	.45
Black Sole Leather Carrying Case, . . . . .	2.50
Glass Plate Adapter, with ground glass, . . . . .	5.00
Double Glass Plate Holders, each, . . . . .	1.25
Kodak Portrait Attachment, . . . . .	.50

## No. 4 SCREEN FOCUS KODAK



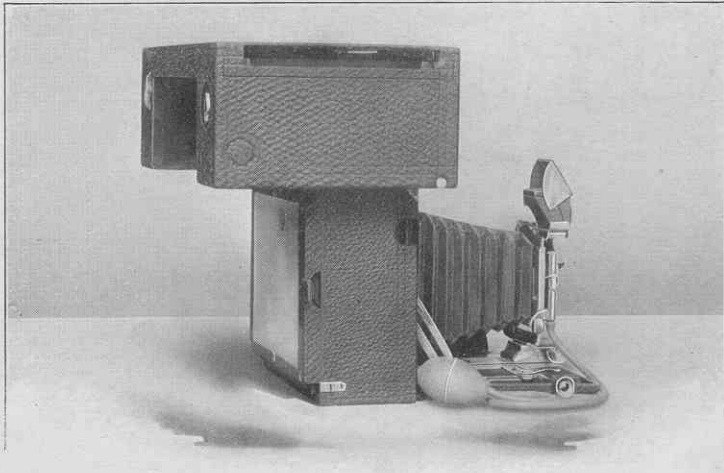
**T**HIS instrument is built upon the Cartridge system, daylight loading principle, but is distinct from all other Kodaks in that it permits focusing on the screen or ground glass without removing the roll of film from the camera. This is accomplished by simply swinging the roll holder containing the film out of the focal plane whenever it is desired to use the ground glass.

The operation of focusing then being accomplished as with the ordinary plate camera, the film holder and film is swung back into the focal plane, dark slide removed and the exposure made. Focusing, of course, may be done between each exposure.

A convenient feature in the construction of this camera is the recess provided for carrying the ground glass within the film holder part of the camera, where it is completely out of the way, but instantly available when desired for use. The dark slide, which protects the film when raised out of the focal plane, is also carried in the roll holder.

## No. 4 SCREEN FOCUS KODAK

CONTINUED



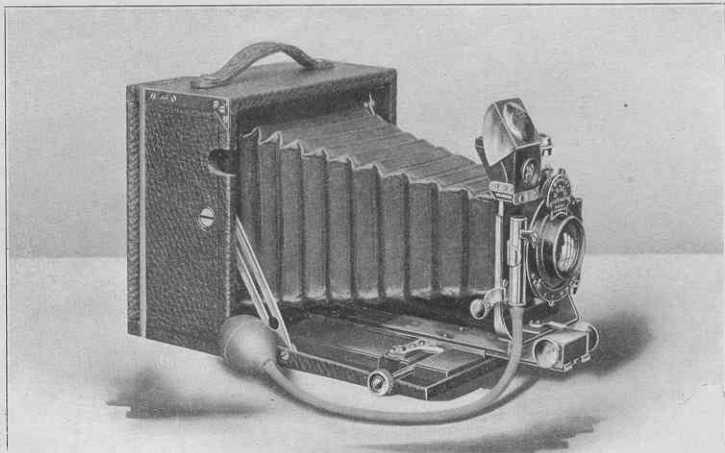
SHOWING GROUND GLASS

This Kodak embodies ideas absolutely new in camera construction. It will be especially appreciated by that class of careful photographers who wish to use film on account of its convenience, yet who want to be able to perfect the composition of their picture by seeing it on the ground glass before exposure. The end is gained in the new cameras, while at the same time all the old Kodak simplicity is conserved.

In operating, the film cartridge is loaded into the camera in daylight in the usual way. To focus on the ground glass, first pull a dark slide from its position in the roll-holding part of the Kodak and insert it in front of the film. This renders the film chamber light-proof. The whole back of the Kodak containing film is then swung up out of the focal plane and the ground glass is placed in position. The mechanism is such that the film cannot be swung up until the dark slide is in position.

## No. 4 SCREEN FOCUS KODAK

CONTINUED



AS A PLATE CAMERA SHOWING EXTENSION FRONT

The roll holder being raised, it catches automatically and remains in position. (Page 27.) The screen or ground glass frame is then removed from its recess in roll holder, described on preceding page, and snapped into position at the back of Kodak, an operation requiring but an instant. The raised roll holder projecting beyond the back of the Kodak will act as a focusing shade, or a focusing cloth may be used. After focusing, the ground glass is removed and returned to its place.

Pressure on a spring releases catch which holds roll holder in position shown in cut. The film is then let down into the focal plane, the dark slide removed, and exposure made.

If desired, the usual focusing scale may be used instead of the ground glass.

The No. 4 Screen Focus Kodak becomes a plate camera by merely removing the roll holder and

## No. 4 SCREEN FOCUS KODAK

CONTINUED

adjusting the plate holder back containing ground glass and focusing shade, an operation requiring but a few seconds.

As a plate camera, it is light, strong, and convenient, being fully as compact as instruments which are constructed for use with plates only.

A feature which will commend the No. 4 Screen Focus Kodak to ambitious amateurs who wish to do their best work with film, is the double extension bed with which the camera is equipped. This allows the operator to work to within 22 inches of the subject when focusing the image upon the ground glass—insuring perfect accuracy and sharpness. This is a valuable feature in copying work, and in taking pictures of still life subjects.

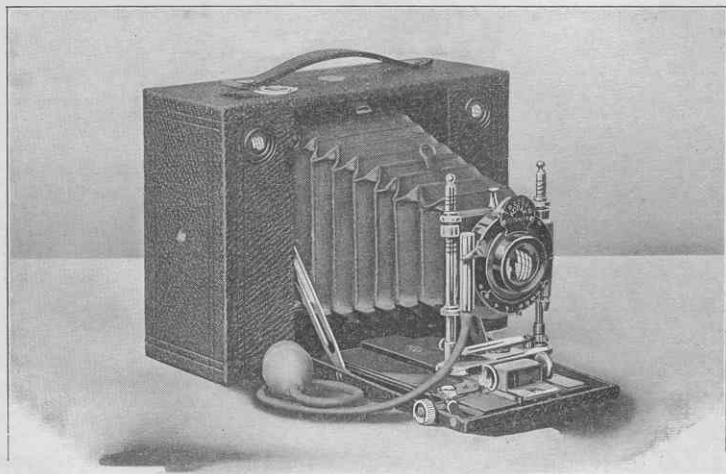
The workmanship on the Screen Focus Kodak is up to the high Kodak standard—which means the very best. No pains have been spared in construction and adjustment to make it satisfactorily accomplish the purpose for which it is intended—that of providing an instrument of the most advanced type. The instrument is covered with the best black seal grain leather and has nickel fittings.

For rectangular pictures, 4 x 5 inches. Capacity, 12 exposures without reloading. Size of Kodak, 10 x 5 $\frac{3}{4}$  x 3 $\frac{3}{8}$  inches. Weight, 3 pounds, 14 ounces. Lens, Rapid Rectilinear f. 8, with focal length of 6 $\frac{1}{2}$  inches. Shutter, Kodak Automatic. (See page 13.) Two tripod sockets. Brilliant reversible finder with hood and spirit level.

### THE PRICE

No. 4 Screen Focus Kodak with Rapid Rectilinear Lens and Kodak Automatic Shutter.	\$80.00
Ditto, with Kodak Automatic Shutter and B. & L. Plagimat Lens No. 2, f. 6.8.	67.50
Ditto, with Volute Shutter and B. & L. Zeiss Tessar Lens, Series II B, No. 5K, f. 6.3.	87.50
N. C. Film Cartridge, 12 exposures, 4 x 5.	.90
Ditto, 6 exposures.	.45
Ditto, "Double-Two" Cartridge, 4 exposures.	.30
Black Sole Leather Carrying Case, velvet lined.	2.50
Glass Plate Adapter.	2.50
Double Glass Plate Holders, 4 x 5.	1.00
Kodak Portrait Attachment.	.50

## CARTRIDGE KODAKS



**I**N the Cartridge Kodaks we have combined the simplicity of the cartridge system with those features of adjustment which give the instrument a wide range for all-round work.

The lenses furnished are strictly rectilinear and very rapid, having a working speed of  $f. 8$ . Wide angle lenses can be supplied at a reasonable extra charge, and the cameras may be fitted with the high-grade anastigmats. These instruments may also be fitted with glass plate attachments (extra).

The No. 3 and No. 4 Cartridge Kodaks are regularly fitted with our new Kodak Automatic Shutter, the No. 5 Cartridge Kodak being regularly equipped with the well-known Unicum Shutter.

The new Cartridge Kodaks have an improved rising front which locks automatically, and a side slide.

An extra extension to bellows, operated by means of rack and pinion, permits the photographing of objects at a distance of only 18 inches from the lens.

## No. 3 CARTRIDGE KODAK

### FILM AND PLATES

For rectangular pictures  $4\frac{1}{4} \times 3\frac{1}{4}$  inches. Capacity, 12 exposures without reloading. Size of Kodak,  $3\frac{1}{4} \times 5\frac{3}{4} \times 7\frac{1}{2}$  inches. Weight, 2 pounds, 12 ounces. Lens, rapid rectilinear, f. 8. Focal length of 6 inches. Shutter, Kodak Automatic. (See page 13.) Two brilliant finders and two spirit levels. Two tripod sockets.

No. 3 Cartridge Kodak, Rapid Rectilinear Lens, Kodak Automatic Shutter, . . .	\$20.00
Ditto, with Kodak Automatic Shutter and B. & L. Plastigmat Lens No. 1, f. 6.8, . . .	52.00
Ditto, with Volute Shutter and B. & L. Zeiss Tessar Lens, Series II B, No. 3, f. 6.3, . . .	72.00
N. C. Film Cartridge, 12 exposures, $4\frac{1}{4} \times 3\frac{1}{4}$ , . . .	70
Ditto, 6 exposures, . . .	35
Ditto, "Double-Two" Cartridge, 4 exposures, . . .	25
Carrying Case, . . .	1.50
Glass Plate Adapter, with ground glass, . . .	2.00
Double Glass Plate Holders, each, . . .	1.00

## No. 4 CARTRIDGE KODAK

### FILM AND PLATES

For rectangular pictures  $5 \times 4$  inches. Capacity, 12 exposures without reloading. Size of Kodak,  $3\frac{3}{4} \times 6\frac{3}{8} \times 8\frac{1}{4}$  inches. Weight, 3 pounds, 2 ounces. Lens, rapid rectilinear, f. 8. Length of focus,  $6\frac{1}{2}$  inches. Shutter, Kodak Automatic. (See page 13.) Two brilliant finders and two spirit levels. Two tripod sockets.

No. 4 Cartridge Kodak, Rapid Rectilinear Lens, Kodak Automatic Shutter, . . .	\$25.00
Ditto, with Kodak Automatic Shutter and B. and L. Plastigmat Lens No. 2, f. 6.8, . . .	62.50
Ditto, with Volute Shutter and B. & L. Zeiss Tessar Lens, Series II B, No. 5K, f. 6.3, . . .	82.50
N. C. Film Cartridge, 12 exposures, $5 \times 4$ , . . .	90
Ditto, 6 exposures, . . .	45
Ditto, "Double-Two" Cartridge, 4 exposures, . . .	30
Carrying Case, . . .	2.00
Glass Plate Adapter, with ground glass, . . .	2.50
Double Glass Plate Holders, each, . . .	1.00

## No. 5 CARTRIDGE KODAK

### FILM AND PLATES

For rectangular pictures  $7 \times 5$  inches. Capacity, 6 exposures without reloading. Size of Kodak,  $3\frac{3}{8} \times 8\frac{1}{2} \times 10$  inches. Weight, 4 pounds, 8 ounces. Lens, rapid rectilinear, f. 8. Length of focus,  $8\frac{1}{2}$  inches. Shutter, Unicum. (See page 14.) Two brilliant finders and two spirit levels. Two tripod sockets.

No. 5 Cartridge Kodak, Rapid Rectilinear Lens, Unicum Shutter, . . . . .	\$ 35.00
Ditto, with B. & L. Automatic Shutter, . . . . .	40.00
Ditto, with B. & L. Automatic Shutter and B. & L. Plastigmat Lens No. 3, f. 6.8, . . .	84.50
Ditto, with Volute Shutter and B. & L. Zeiss Tessar Lens, Series II B, No. 6, f. 6.3, . . .	105.00
*N. C. Film Cartridge, 6 exposures, $7 \times 5$ , . . . . .	80
Ditto, "Double-Two" Cartridge, 4 exposures, . . . . .	55
Carrying Case, . . . . .	2.50
Glass Plate Adapter, with ground glass, . . . . .	3.00
Double Glass Plate Holders, each, . . . . .	1.25

\*Not furnished in 12 exposures cartridges.